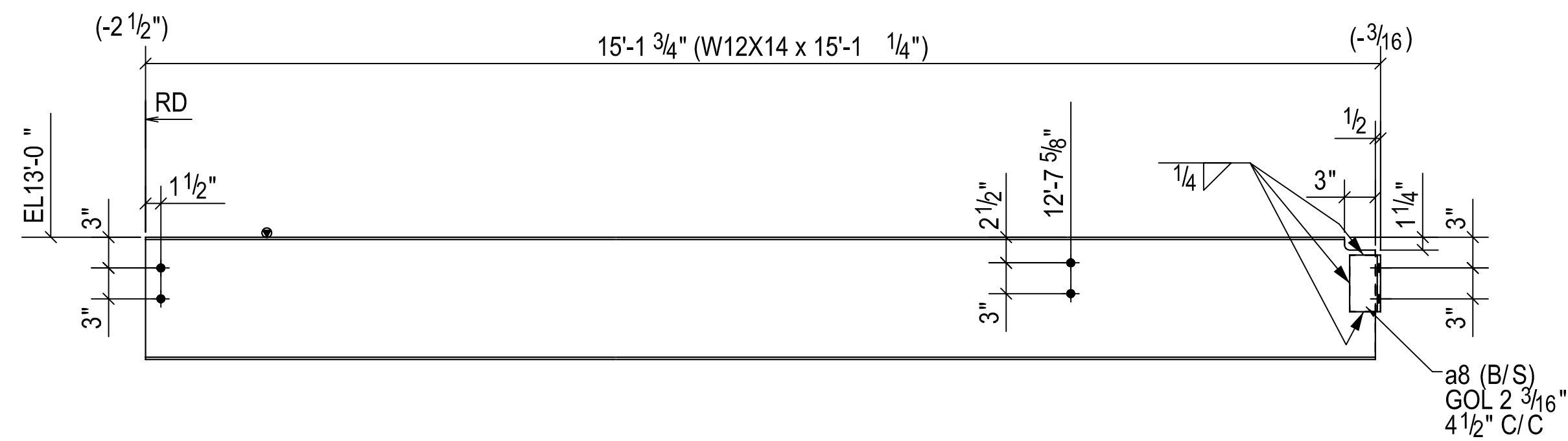
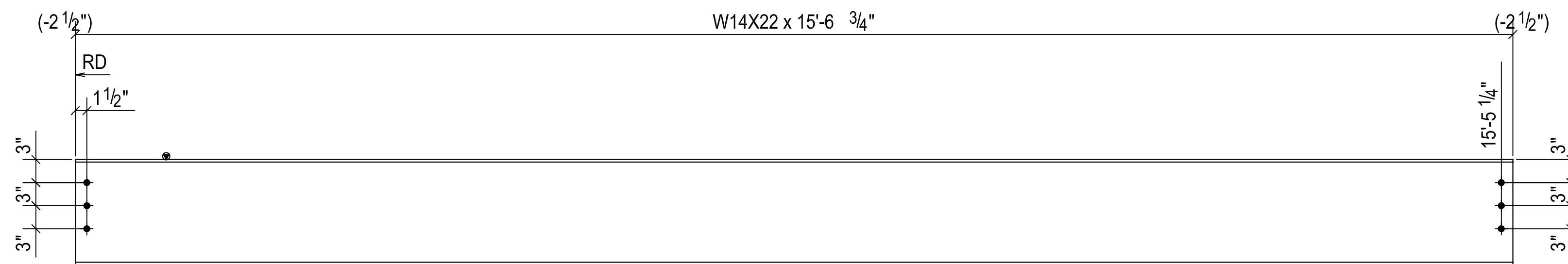


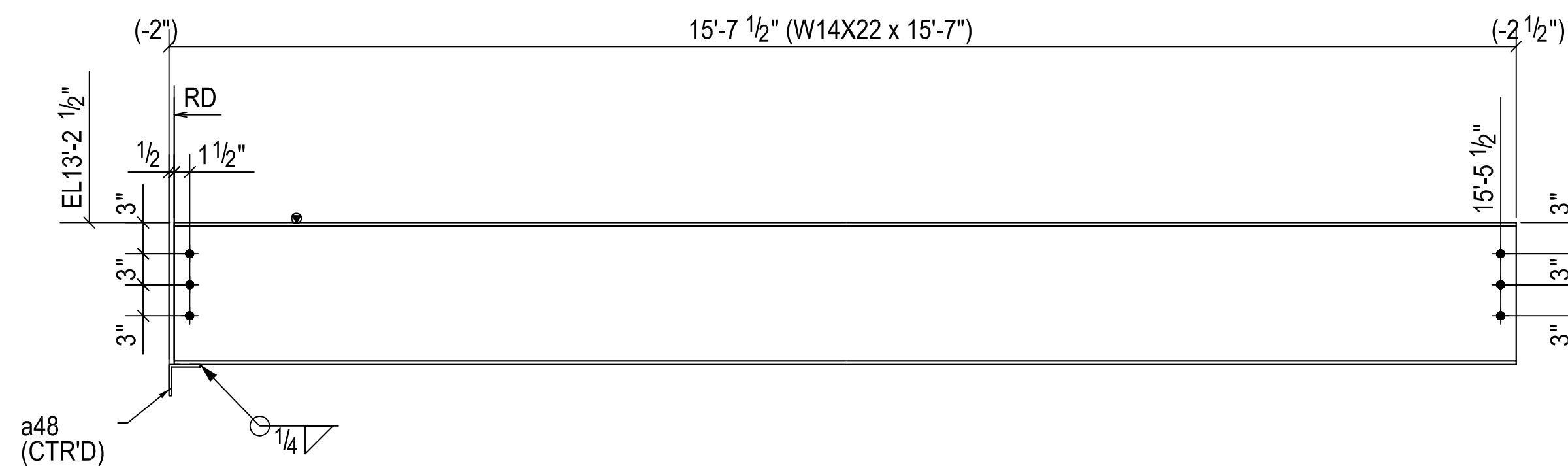
ONE - BEAM - 103B1



ONE - BEAM - 103B2



ONE - BEAM - 103B3



ONE - BEAM - 103B4

SEQUENCE	SHIPMENT		DESCRIPTION	LENGTH		NOTES	FIN.
	MARK	TEM		QTY	SECTION		
	103B1		1	BEAM			
		103B1	1	W16X26	9'-4"	A992	PRIMED
		p56	1	PL3/8"X4 1/16"	0'-8 1/2"	A36	
			3	3/4"Ø A325N BOLT	0'-1 3/4"		
				FIELD BOLTS			
			3	A325N 3/4" DIA	0'-1 3/4"	WINUT & WASHER	
	103B2		1	BEAM			
		103B2	1	W12X14	15'-1 1/4"	A992	PRIMED
		a8	2	L4X3X5/16	0'-5 1/2"	A36	
				FIELD BOLTS			
			4	A325N 3/4" DIA	0'-2"	WINUT & WASHER	
				FIELD BOLTS			
			2	A325N 3/4" DIA	0'-1 3/4"	WINUT & WASHER	
	103B3		1	BEAM			
		103B3	1	W14X22	15'-6 3/4"	A992	PRIMED
				FIELD BOLTS			
			6	A325N 3/4" DIA	0'-1 3/4"	WINUT & WASHER	
	103B4		1	BEAM			
		103B4	1	W14X22	15'-7"	A992	PRIMED
		a48	1	L3X3X1/4	0'-4"	A36	
				FIELD BOLTS			
			6	A325N 3/4" DIA	0'-1 3/4"	WINUT & WASHER	